

Les Jardins d'Adèle

Avenue du Neuhof
Rue de l'Abbé de l'Epée
67100 STRASBOURG

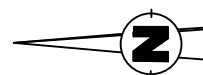
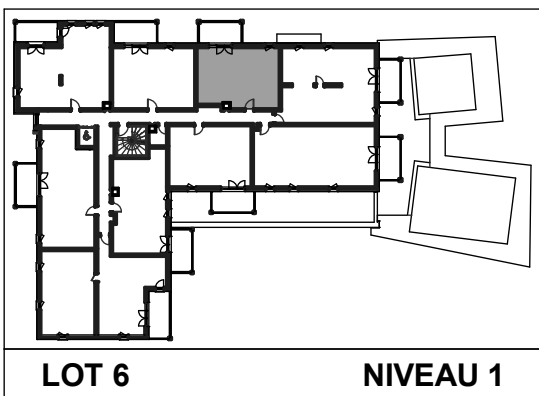
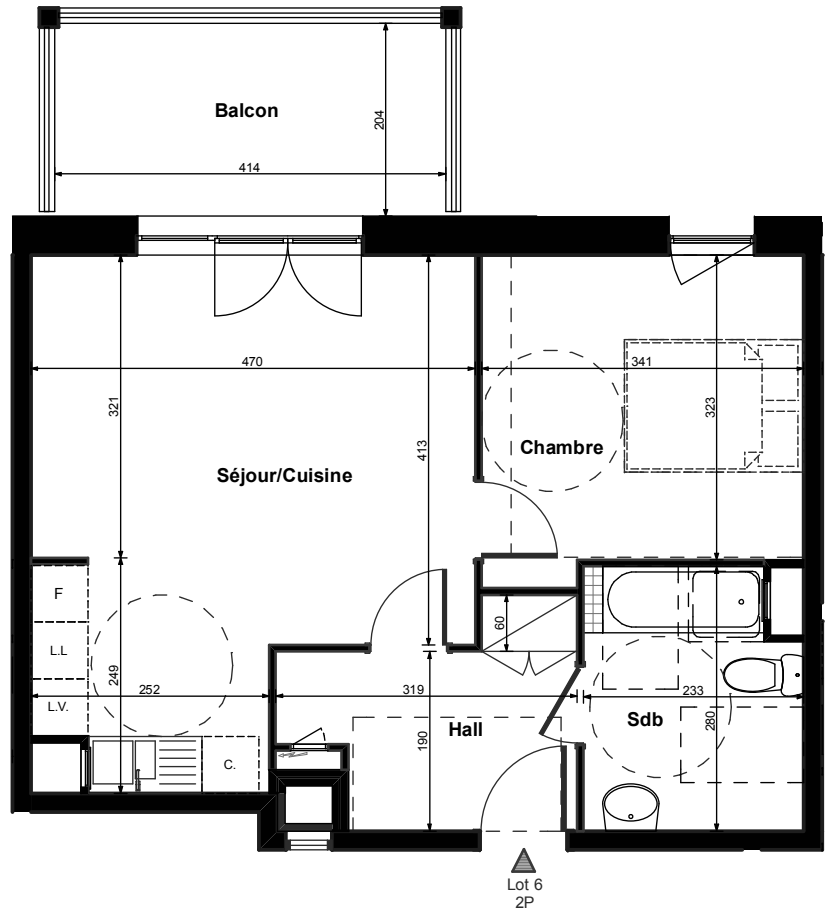
2 PIECES - NIVEAU 1

LOT 6

HALL	:	5.96 m ²
SEJOUR/CUISINE	:	22.95 m ²
CHAMBRE	:	11.32 m ²
SDB	:	6.19 m ²

TOTAL HABITABLE : 46.42 m²

SURFACE BALCON : 8.44 m²



BIK Architecture Grand Est
Date : 04.03.2011